

**COPAN**

Innovating Together™

# WASP®DT: WALK-AWAY SPECIMEN PROCESSOR

**Allows the Freedom to Walk Away from Specimen Set Up and Focus on High Level Tasks**

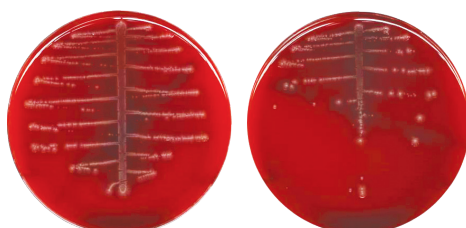
WASP®DT is an open platform, modular instrument, which fully automates all aspects of Microbiology specimen processing:

- Planting and Streaking
- Gram Slide Preparation
- Enrichment Broth Inoculation
- Kirby-Bauer and ID Disk Application



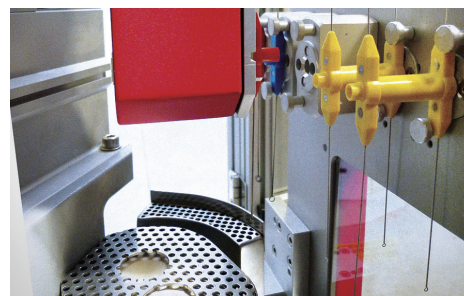
## 1µL 10µL 30µL Loops

WASP®DT utilizes reusable metal loops ranging in size, to provide the lab the precise volumes necessary for quantitative analysis. Other automation uses pipet tips, which cannot transfer volumes less than 10µL.



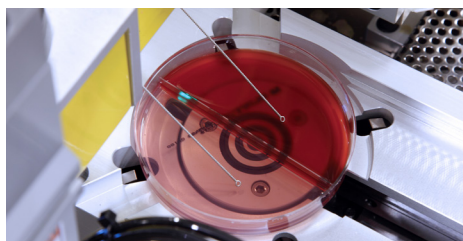
10µL: Limited isolated colonies

1µL: Ideal colony isolation



## Load & Walk Away

- Uninterrupted Plate and Specimen Loading and Unloading Increases Productivity and Throughput
- Protocol-Driven Automatic Loop Change Increases Walk-Away Time



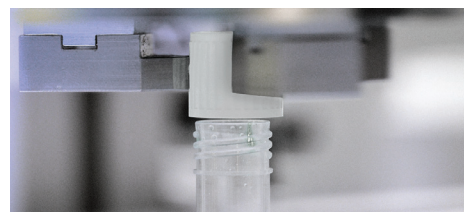
## Planting & Streaking

- The WASP®DT Intuitive Software Offers a Wide Library of Classical Streak Patterns for Whole Plates and Bi-Plates
- Consistent and Reliable Planting and Streaking on Every Plate



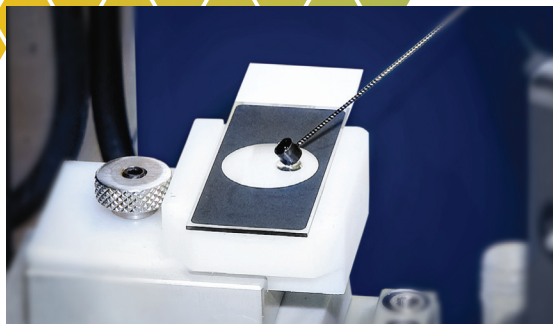
## Freedom to Choose

- Media Carousel Includes Nine Silos
- Accepts Any Manufacturer's Plated Media



## Automatically Opens & Recaps the Sample

- Grippers and Decappers Automatically Adjust to Almost Any Size Specimen Container

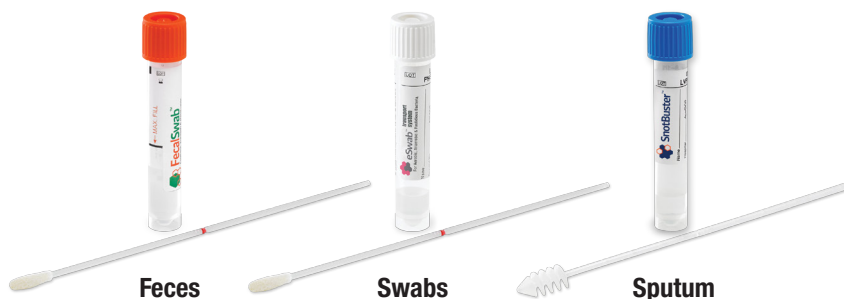


## Gram SlidePrep™ Module & Automatic Enrichment Broth Module

- Automated Gram Slide Preparation and Enrichment Broth Inoculation Complete the Specimen Setup Process
- Modular Configuration Allows for Flexibility and Freedom to Adjust Equipment to the Changing Needs of the Lab

## Liquid Based Microbiology (LBM) Makes the Most Challenging Samples Easy to Automate

COPAN's LBM products allow for the highest utilization of automated specimen processing by liquefying and standardizing sputum, feces and swab samples. Solid samples, such as tissues, or traditional swabs can also be processed on WASP®DT using the "Streak Only" mode.



## Accuracy, Reproducibility & Quality

- Individualized Specimen Management, Containment and Confinement Measures Ensure Clean Work Environment
- Versatile Protocol Options Drive Culture Quality, and Improve Sensitivity & Cost Efficiency
- Image Analysis Verification System: Ensures Accuracy and Integrity of Loop and Presence of Inoculum

### WASP®DT:

Dimensions:	43.5 inches wide x 81.5 inches long x 76 inches high
Weight:	Approximately 1,300 lbs
Input Voltage:	220V, 20Amps
Network Ethernet:	100 MB
Interface:	LIS interface available upon request
Peripherals:	Touch screen monitor, external barcode reader, label printer
Certifications:	CE, UL, CSA
Electrical Receptacle Plug:	HBL2321 250V / 20A (for USA and Canada)

### GRAM SLIDEPREP™:

Dimensions:	28 inches wide x 23 inches long x 49.5 inches high
Weight:	Approximately 221 lbs

**VISIT  
COPANUSA.COM  
or call us at  
(800) 216-4016  
for product  
information.**

**Follow us on  
social media**

